



# Electrical Solutions



Axia Electric is a full-service electrical contractor specializing in complex, high-performance infrastructure. With GC-level expertise and a reputation for closing scope gaps, our team delivers seamless execution across water/wastewater, energy, transit, and industrial projects—minimizing risk and driving schedule certainty.

Backed by the strength of Shimmick, a nationally recognized infrastructure leader with over a century of experience, we bring deep self-perform capabilities and a collaborative mindset to deliver mission-critical systems that power and connect communities.

## KEY ADVANTAGES:

- **Comprehensive Electrical Expertise:** From power distribution and transmission to automation and process control, we provide a full range of electrical services.
- **Self-Performance Capability:** Unlike traditional electrical contractors, we have the ability to self-perform civil, mechanical, and process-related scopes when needed.
- **General Contractor-Level Insight:** Our team has a comprehensive understanding of complete project sequencing and can provide oversight beyond standard electrical work.
- **Commissioning & Startup Leadership:** We integrate electrical commissioning from the outset, ensuring seamless startup and system integration.

## KEY CONTACT

**Fernando DeLeon**, President, Axia Electric  
[fdeleon@axia-electric.com](mailto:fdeleon@axia-electric.com)

**Jennifer Weidel**, Sr. BD Manager  
[Jennifer.Weidel@axia-electric.com](mailto:Jennifer.Weidel@axia-electric.com)

14529 Innovation Drive, Suite B  
Riverside, CA 92518  
833-723-2021

[www.Axia-Electric.com](http://www.Axia-Electric.com)

Headquarters: Irvine, CA  
Regional Offices: Suisun City, CA  
and Denver, CO

# Specialized Electrical Solutions Across Critical Infrastructure Markets

## TRANSIT & RAIL SYSTEMS

We deliver all types of power infrastructure for railway projects, from overhead catenary and traction power systems to SCADA and signal systems. Our experience spans new construction and system upgrades, working as a general contractor, subcontractor, designer, or design-builder on rail transit projects across the country.

## WATER & WASTEWATER

Ranked among the largest water supply contractors in the U.S., Shimmick self-performs electrical, instrumentation, and process mechanical scopes on major projects like the \$357M North City Pure Water Facility, the \$205M Skinner Water Treatment Plant, and others. We integrate emergency power systems, controls, and switchgear to ensure reliable, efficient operations.

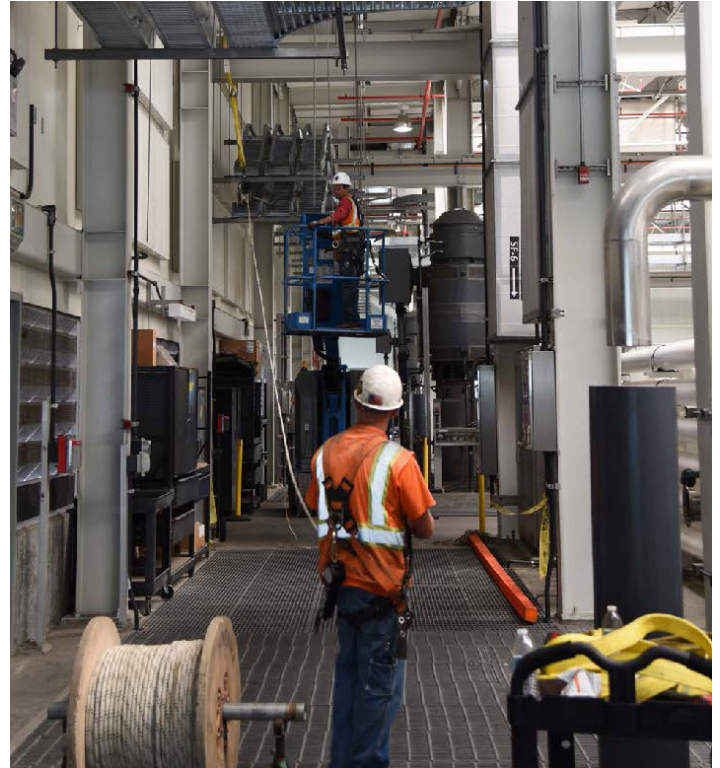


## POWER TRANSMISSION & DISTRIBUTION

We bring expert knowledge of systems 5-35KV and above, including substations, switchyards, and generators. Our experienced teams perform to utility standards and deliver on schedule with exceptional quality—from urban substations to remote transmission projects.

## ALTERNATIVE ENERGY

Providing design services and installation of energy storage, generation and monitoring systems, our team helps clients meet renewable goals with efficient solutions



## INDUSTRIAL & PROCESS SYSTEMS

We provide electrical integration for industrial facilities including refineries, conveyance, and process plants. Our team ensures system reliability, safety, and performance in these complex and demanding environments.

## TECHNOLOGY-DRIVEN PROJECTS

From data centers and server farms to specialized conditioned power systems, we support fast-track, tech-driven infrastructure with precision and agility. Our electrical services meet the growing demands of modern digital operations.

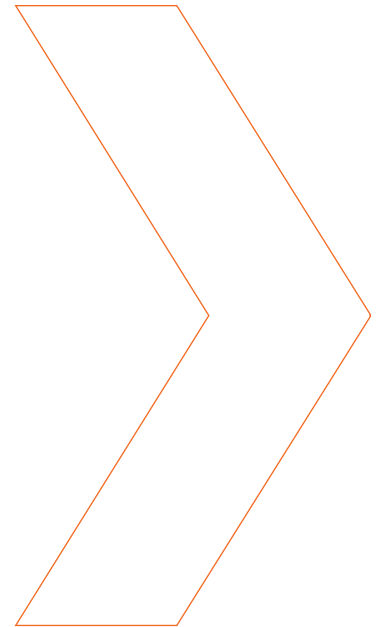
From powering transit systems to energizing water facilities, industrial plants, and data centers—Axia Electric delivers integrated electrical solutions tailored to the complexity and scale of each project we take on.



# Specialized. Self-Performed. Proven.

Axia Electric self-performs specialty electrical and process mechanical services for transit, water treatment and resources, power transmission and distribution, dams and locks, and other civil infrastructure projects.

Axia Electric is one of a small group of industry peers with the ability to generate and execute commissioning plans for all electrical scopes of work. We attribute our success to our highly specialized, licensed, and experienced personnel, many of whom have been in the industry for several decades.



## **Groundwater Replenishment System Expansion**

Location: Fountain Valley, CA  
Client Name: Orange County Water District



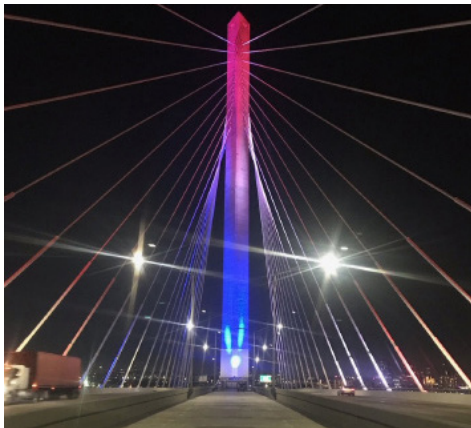
## **Miramar Reservoir Pump Station Improvements**

Location: San Diego, CA  
Client Name: City of San Diego



## **Miramar Clearwell Improvements**

Location: San Diego, CA  
Client Name: City of San Diego



## **Gerald Desmond Bridge**

Location: Long Beach, CA  
Client Name: Port of Long Beach



## **Robert Goldsworthy Desalter Expansion**

Location: Torrance, CA  
Client Name: Water Replenishment District of Southern California



## **Robert B. Diemer Water Treatment Plant**

Location: Yorba Linda, CA  
Client Name: Metropolitan Water District of Southern CA





### **BART Station Emergency Lighting**

Location: Bay Area, CA  
Client Name: Bay Area Rapid Transport (BART)



### **P2-123 Return Activated Sludge Piping Replacement**

Location: Huntington Beach, CA  
Client Name: Orange County Sanitation District



### **P2-122 Headworks Modifications at Plant 2**

Location: Huntington Beach, CA  
Client Name: Orange County Sanitation District



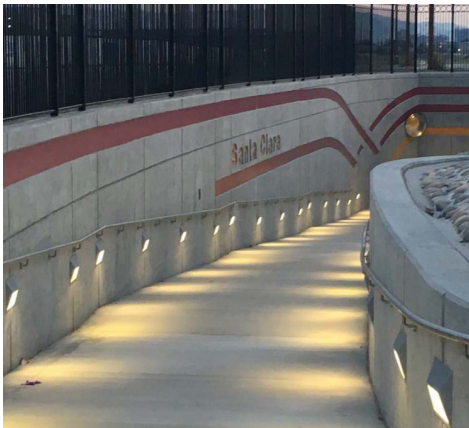
### **Pure Water Oceanside Advanced Water Purification Facility**

Location: Oceanside, CA  
Client Name: City of Oceanside



### **Outfall Low Flow Pump Station**

Location: Huntington Beach, CA  
Client Name: Orange County Sanitation District



### **Caltrain Station Pedestrian Underpass**

Location: Oakland, CA  
Client Name: Santa Clara Valley Transportation Authority



### **LAX West Concourse Electrical Improvements**

Location: Los Angeles, CA  
Client Name: Los Angeles World Airports

## **NOTABLE WINS**

### **J-98, Electrical Power Distribution System Improvements**

Client: Orange County Sanitation District  
Location: Huntington Beach, CA  
Contract: \$24.3M Bid-Build

### **Sunol Valley Water Treatment Plant Short-Term Improvements (Electrical Package)**

Client: San Francisco Public Utilities Commission  
Location: Sunol, CA  
Contract: \$5.4M Bid Build

## AIRPORT CONSTRUCTION EXPERTISE

Working in a live airport environment requires a specialized understanding of operational continuity, safety, and security. At Los Angeles International Airport (LAX), one of the busiest airports in the world, Axia Electric has consistently delivered complex infrastructure and terminal improvement projects while maintaining full airport functionality. Successful construction in this environment demands close coordination with airport stakeholders, adherence to strict security and badging requirements, and careful phasing to minimize impacts to travelers and airport staff. Our teams are experienced in navigating TSA regulations, restricted work hours, and logistics challenges such as access to secure airside areas and scheduling around flight operations. We understand the importance of clear communication, proactive planning, and meticulous execution to meet the unique demands of airport work.



### LAX West Concourse Electrical Improvements

**Location:** Los Angeles, CA

**Value:** \$2.7M

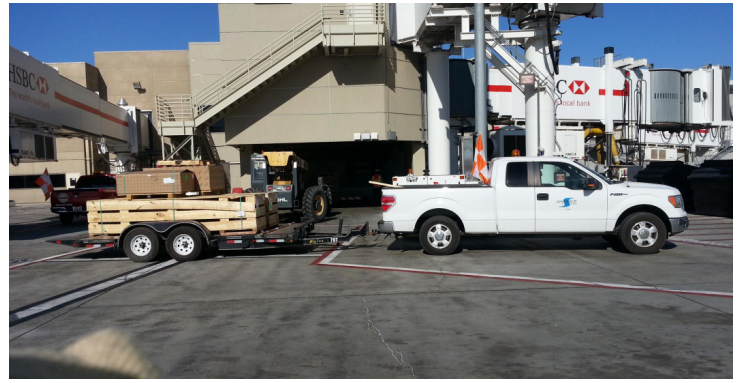
**Delivery Method:** Bid-Build

**Client Name:** Los Angeles World Airports

This project at the Los Angeles International Airport involved re-feeding this gate with new power, cutting over the old 5KV power servicing existing switchgear, removing the 4160 transformers and re-feeding the existing gear out of new 480V gear. To do this, Shimmick installed conduit, welded supports, switchgear and Buss Duct over the roof of Gate 123, pulled cable thru some existing conduits, existing live manholes, existing live pull boxes and terminating.

The project was on an accelerated schedule that Shimmick met, even with the unique circumstances of the job and the very strict security and badging process at LAX.

Additional work included roofing demo and repair, stucco removal and repair and welding to existing beams and columns. Shimmick completed the work on the roof without any damage to the finished ceiling below.



### LAX Bradley West Core Renovation – Phase 0

**Location:** Los Angeles, CA

**Value:** \$94.6M

**Delivery Method:** Bid-Build

**Client Name:** Los Angeles World Airports

This renovation at LAX's Bradley West Core involved a wide-ranging scope of phased improvements. Shimmick led mechanical, structural, and architectural demolition, which was necessary for the expansion of the Great Hall Core. Work elements included the reconfiguration of vertical circulation, including new elevators and stairs, and the relocation of various utilities and infrastructure.

Construction took place in an active terminal, requiring careful phasing and coordination with airport operations. Shimmick worked closely with stakeholders to maintain access and ensure the safety of the traveling public.

### LAX Bradley West Concourse Gate 123

**Location:** Los Angeles, CA

**Value:** \$8.6M

**Delivery Method:** Bid-Build

**Client Name:** Los Angeles World Airports

This project included refeeding Gate 123 with new power, cutting over the old 5KV power source, removing 4160 transformers, and refeeding the existing gear with new 480V equipment. The work involved conduit installation, welded supports, switchgear, and Buss Duct installation over the roof of Gate 123. Axia Electric also pulled cable through live manholes and pull boxes, and completed termination.

In addition to the electrical work, Axia Electric managed roofing demolition and repair, stucco removal and restoration, and welding on existing beams and columns. The project was executed on an accelerated schedule, all within the strict constraints of LAX's security protocols, with no damage to surrounding finished spaces.



# Powering Projects Nationwide

We deliver high-performance electrical and systems work across critical infrastructure markets, with a growing national presence and a strong reputation for quality, reliability, and partnership.

**Strategic National & Regional Reach:** Based on the West Coast with the ability to scale operations nationwide, our team is equipped to mobilize wherever projects demand.

**Strong Relationships.** We work with a broad range of clients, including federal, state, local, and private entities. We are a trusted partner to organizations such as: USACE, NAVFAC, Caltrans, Caltrans, LA Metro, Sound Transit, San Francisco Public Utilities Commission (SFPUC), Orange County Water District (OCWD).

**Diverse Experience.** Our team has proven expertise across multiple sectors, with successful project delivery for multiple contract types.

We bring exceptional technical knowledge, a commissioning-first mindset, and self-perform capabilities to help you reduce risk, close scope gaps, and deliver with confidence.



## SERVICES

- Actuators
- Boilers & Chillers
- Centrifuges
- Commissioning & Startup
- Communication
- Control Centers
- Fiber Optics
- Fire Suppression Systems
- Flocculators
- Gates
- Generators, Substations & Switchgear
- HVAC
- Heat Exchangers
- High, Medium, & Low Voltage
- Industrial Coatings
- Motor Operated Valves
- Motor & Process Control Instrumentation
- Overhead Catenary
- Ozone Generators
- Power Distribution & Transmission
- Power Generation
- Process Piping
- Pumps & Valves
- Pipe Supports
- Raceway, Wire & Cable
- Rail Signaling
- SCADA
- Stainless Steel, Ductile & Welded Steel Pipe
- Traction Power
- Train Controls
- WWTP Clarifier Skimmers & Rake Arms

## NAICS CODES

- |        |   |
|--------|---|
| 221310 | Water Supply and Irrigation Systems         |
| 221320 | Sewage Treatment Facilities                 |
| 236210 | Industrial Building Construction            |
| 237110 | Water and Sewer Line and Related Structures |
| 237310 | Highway, Street, & Bridge Construction      |
| 237990 | Heavy Civil Engineering & Dredging          |
| 238210 | Electrical Contractors                      |
| 238910 | Site Preparation Contractors                |